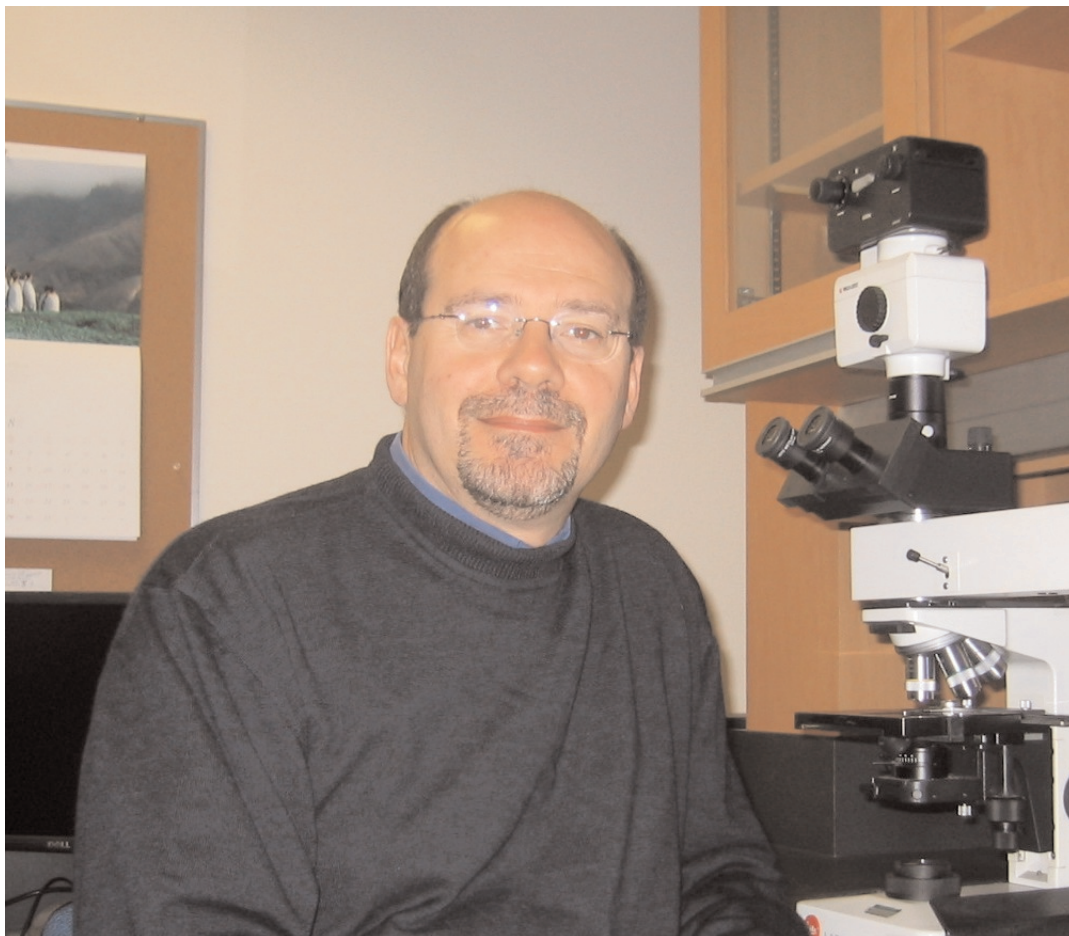


## **Announcement**

### **The Jeremy Jass Prize for Research Excellence in Pathology**



After consideration by the Officers of the Pathological Society and with the permission of Johanna Jass (Jeremy's widow), Joanna and Simon (his children), Leon (his father) and other members of the family, the Editor-in-Chief and Editorial team wish to announce the establishment of an Annual Award that will recognise and commemorate the enormous contribution that Jeremy Jass made to pathological research.

It has been agreed that this shall be known as

#### **“The Jeremy Jass Prize for Research Excellence in Pathology”**

This will be an annual award to be made to the authors of a research paper published in the *Journal of Pathology*. The award will be made annually one year in arrears with the first award being made in January 2010 for a paper that has been published in the calendar year 2008. The award will be made by the Editor-in-Chief on behalf of the Editorial team who will make the judgment based on scientific excellence, novelty and importance.

The award will consist of a certificate for each author and a medal to the lead author. This will be presented at a Scientific Meeting of the Pathological Society.

**Peter A Hall**  
*Editor-in-Chief, Journal of Pathology*

**David A Levison**  
*President, Pathological Society*