



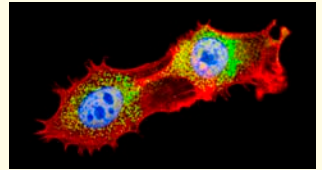
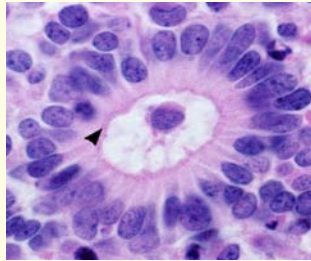
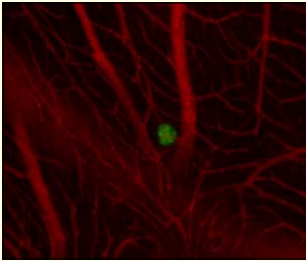
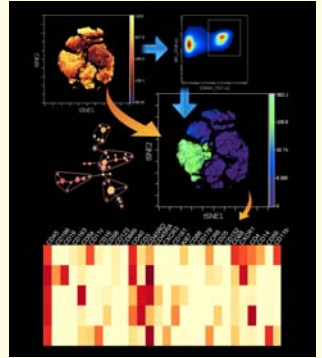
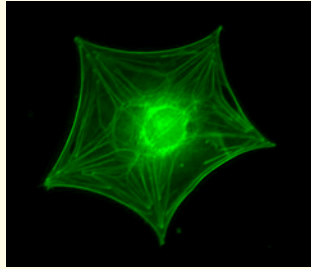
THE UNIVERSITY  
of EDINBURGH



The ROYAL  
SOCIETY of  
MEDICINE

MANCHESTER  
1824

The University of Manchester



# WINTER MEETING

21 – 22 January 2020

## *Molecular and Digital Pathology: The Future*

---

**3<sup>rd</sup> Joint Meeting with the Royal Society of Medicine**  
**212<sup>th</sup> Scientific Meeting of the Pathological Society of Great Britain & Ireland**

---

**Hosted by**  
 The University of Edinburgh and  
 The University of Manchester

**Venue**  
 The Royal Society of Medicine,  
 1 Wimpole Street, Marylebone,  
 London W1G 0AE



# **Winter Meeting**

**Important Deadline**

**Advance Registration**

**Sunday 19 January 2020**

(23.59 hours, UK time)

<b>Programme Overview</b> .....	2
<b>Scientific Sessions Information</b> .....	4
<b>Continuing Professional Development (CPD)</b> .....	5
<b>General Arrangements</b> .....	6
<b>Future Meetings</b> .....	7
<b>Fees and Registration</b> .....	8
<b>Detailed Programme — Tuesday 21 January 2020</b> .....	10
<b>Detailed Programme — Wednesday 22 January 2020</b> .....	15
<b>Trade Exhibition / Sponsors</b> .....	18
<b>Abstract Reviewers</b> .....	19
<b>Index of Presenters and Abstract Numbers</b> .....	20

Refer to [www.pathsoc.org](http://www.pathsoc.org) or [www.rsm.ac.uk](http://www.rsm.ac.uk) for Abstract Listings:

▶ Invited Speakers ▶ Plenary Oral ▶ Posters

---

## PROGRAMME ACKNOWLEDGEMENTS

This Programme is published jointly by the Royal School of Medicine and the Pathological Society of Great Britain & Ireland. © 2019

### PHOTOGRAPHS

All cover photographs are reproduced with permission.

Specific cover photograph credits:

(top centre and top right): Dr Carlos de Figueiredo, a post-doctoral researcher in Melanoma at LOORG ([www.loorg.org](http://www.loorg.org)), University of Liverpool.

(lower left): Dr Anne Herrmann, a post-doctoral researcher at the University of Liverpool, investigating GFP-labelled neuroblastoma cells in chick embryo model.

(lower right): Dr Mateus Milani, a post-doctoral researcher at the University of Liverpool, working on proteins involved in mitochondrial fission.

This publication was designed and produced in England by Byte & Type Limited, Birmingham (Tel: 0333 666 4321).

<b>08.30–09.25</b> ▶pg 10 [Foyer] <b>Registration and Coffee</b>	
<b>09.25–09.30</b> ▶pg 10 [Guy Whittle Auditorium] <b>Welcome and Introduction</b> Prof MJ Arends, University of Edinburgh, UK Dr EW Benbow, University of Manchester, UK	
<b>09.30–11.10</b> ▶pg 10 [Guy Whittle Auditorium] <b>Symposium: <i>Digital and Optical Pathology</i></b>	
<b>11.10–11.45</b> ▶pg 11 [Atrium] <b>Refreshment Break, Poster Viewing and Trade Exhibition</b>	
<b>11.45–12.45</b> ▶pg 11 [Guy Whittle Auditorium] <b>Symposium: <i>Digital and Optical Pathology</i> (continued)</b>	
<b>12.45–13.45</b> ▶pg 11 [Atrium] <b>Lunch and Trade Exhibition</b>	<b>13.00–13.45</b> ▶pg 12 [Atrium/Cavendish Room] <b>Poster Viewing and Chairman's Rounds</b>
<b>13.45–15.15</b> ▶pg 12 [Guy Whittle Auditorium] <b>Symposium: <i>Education Session – Pathologists Must Teach!</i></b>	
<b>15.15–15.45</b> ▶pg 13 [Atrium] <b>Refreshment Break, Poster Viewing and Trade Exhibition</b>	
<b>15.45–16.30</b> ▶pg 13 [Guy Whittle Auditorium] <b>Plenary Oral Presentations</b>	
<b>16.30–16.40</b> ▶pg 14 [Guy Whittle Auditorium] <b>Presentation: <i>Journal of Pathology</i> Jeremy Jass Prize for Excellence in Pathology</b>	
<b>16.45–17.25</b> ▶pg 14 [Guy Whittle Auditorium] <b>Pathological Society Goudie Lecture: <i>Autophagy and Neurodegeneration</i></b> Prof DC Rubinsztein, Cambridge, UK	
<b>17.25–17.30</b> ▶pg 14 [Guy Whittle Auditorium] <b>Closure of Day 1</b> Prof MJ Arends, University of Edinburgh, UK	
<b>19.00–23.00</b> ▶pg 14 [Churchill Cabinet War Rooms, London] <b>Society Dinner</b> <i>Dinner starts at 20.00 and the venue must be vacated by 23.00.</i> <i>The Museum may be viewed before Dinner (audio guides will be available).</i>	

<b>08.30–09.05</b> ▶pg 15 [Foyer] <b>Registration and Coffee</b>
<b>09.05–09.10</b> ▶pg 15 [Guy Whittle Auditorium] <b>Welcome and Introduction</b> Prof CS Herrington, University of Edinburgh, UK
<b>09.10–10.40</b> ▶pg 15 [Guy Whittle Auditorium] <b>Symposium: <i>Molecular Pathology – The Future (Part 1)</i></b>
<b>10.40–11.15</b> ▶pg 15 [Atrium] <b>Refreshment Break, Poster Viewing and Trade Exhibition</b>
<b>11.15–12.40</b> ▶pg 15 [Guy Whittle Auditorium] <b>Symposium: <i>Molecular Pathology – The Future (Part 2)</i></b>
<b>12.40–13.05</b> ▶pg 16 [Guy Whittle Auditorium] <b>‘Rapid-Fire’ Oral Presentations</b>
<b>13.10–14.00</b> ▶pg 16 [Atrium] <b>Lunch, Poster Viewing and Trade Exhibition</b>
<b>14.00–14.05</b> ▶pg 17 [Guy Whittle Auditorium] <b>‘Rapid-Fire’ Oral Prize Announcements</b>
<b>14.05–15.15</b> ▶pg 17 [Guy Whittle Auditorium] <b>Symposium: <i>Molecular Pathology – The Future (Part 3)</i></b>
<b>15.15–15.35</b> ▶pg 17 [Atrium] <b>Refreshments and Close of Meeting</b>

## FREE PAPER SESSIONS

### **PLENARY ORAL SESSION** [Guy Whittle Auditorium]

The three highest-ranked submitted oral abstracts will be presented on Tuesday 21 January, 15.45–16.30.

**Prize:** A prize for the best presentation, donated by *The Journal of Pathology*, will be presented at the Society Dinner on Tuesday 21 January.

### **RAPID-FIRE ORAL PRESENTATIONS** [Guy Whittle Auditorium]

There will be five presentations, selected from the top scored abstracts, on Wednesday 22 January, 12.40–13.05. These presentations will also be presented as Posters.

Prizes for the three best presentations will be announced at 14.00 on Wednesday 22 January.

### **POSTERS, VIEWING AND CHAIRMAN'S ROUNDS** [Atrium/Cavendish Room]

#### **Viewing**

Tuesday 21 January, 11.10–11.45 and 15.15–15.45.

Wednesday 22 January, 10.40–11.15 and 13.10–14.00.

Delegates are encouraged to visit the posters during break times and lunchtimes as well as during the official rounds.

#### **Formal Poster Viewing, Chairman's Rounds**

Tuesday 21 January, 13.00–13.45.

#### **Prizes**

Poster Round Chairs will be circulating on Tuesday 21 January to select winners of the Cambridge University Press Prizes.

Winners will be announced at the Society Dinner on Tuesday 21 January.

**Posters need to be displayed until at least 18.00 on Tuesday 21 January as the final judging for the competition will take place during the refreshment break.**

### Posters – Information for Presenters

- ▶ Dimensions are A0 portrait (1189 x 841 mm) — please do not exceed these dimensions.
- ▶ The presenting author (or another author) must attend the meeting and present the poster during the allocated poster rounds in order for the abstract to be published in *The Journal of Pathology On-Line Supplement* (except where authors have been notified that their abstract will not be published in the *Journal*).
- ▶ Velcro will be supplied.
- ▶ **Scienceposters** – the Society can offer a poster printing service via *Scienceposters*. See information on our website: [www.pathsoc.org](http://www.pathsoc.org)

### CONTINUING PROFESSIONAL DEVELOPMENT (CPD)

This Meeting has been approved by the **Royal College of Pathologists** and **The Royal Society of Medicine** for the purpose of Continuing Professional Development. Credits can be accrued as follows:

#### Royal College of Pathologists

The Royal College of Pathologists has approved the Conference as detailed below.

##### Full Day\*

Tuesday 21 January      6 credits

Wednesday 22 January    4 credits

*\* The Pathological Society issues RCPATH Certificates and we are not permitted to issue Certificates for less than full-day attendance. Delegates should use the reflective note section of their CPD Portfolio to self-accredit.*

#### The Royal Society of Medicine

##### Full Day\*

Tuesday 21 January      6 credits

Wednesday 22 January    5 credits

*\* The Royal Society of Medicine issues CPD Certificates and cannot issue Certificates for less than full-day attendance.*

## GENERAL ARRANGEMENTS

### **SOCIETY DINNER** [Churchill Cabinet War Rooms, London]

**Tuesday 21 January 2020, 19.00 for Dinner at 20.00.**

There is time before the Dinner to allow for viewing the Museum (audio guides will be available). Dinner ends at 23.00 (the venue must be vacated by 23.00).

For more details of the venue please use the direct link to the right.

[Dinner Venue](#)

Ticket prices:

- ▶ Undergraduates: £ 30.00
- ▶ All other delegates (*up to* Wed 13 Nov 2019, 23.59 hrs UK time): £ 65.00
- ▶ All other delegates (*after* Thu 14 Nov 2019, 00.01 hrs UK time): £ 90.00

Please book your ticket(s) when registering online.

### **TRADE EXHIBITION** [Atrium]

There will be a trade exhibition adjacent to the catering and poster displays.

Delegates are encouraged to visit and are requested to support the companies represented there.

### **PRESENTATION CHECKING AND PREVIEW** [Guy Whittle Auditorium]

Presentation Checking and Preview will be available. Please hand in your presentation at least 30 minutes before the start of the session.

### **INTERNET ACCESS**

Delegates will be issued with access details at the Registration Desk.

### **MESSAGES**

During the Meeting, messages for delegates may be left at the following telephone number: +44 (0)796 402 4118

### **REFRESHMENTS** [Atrium]

All refreshments will be served in the Atrium unless otherwise specified in the Programme.

### **BADGES**

Delegates are requested to wear their badges **at all times**.

### **COATS AND BAGS**

Secure facilities will be provided for coats and bags.

### **DISCLAIMER**

The Pathological Society of Great Britain & Ireland and The Royal Society of Medicine cannot be held responsible for any injury or loss sustained during the Meeting.



**TRAVEL, ACCOMMODATION AND VENUE**

Please refer to the meeting website for all information: [www.pathsoc.org](http://www.pathsoc.org)

**ENQUIRIES**

Before the meeting please contact:

**Pathological Society of Great Britain & Ireland**

Address 7<sup>th</sup> Floor, 6 Alie Street, London E1 8QT

Telephone +44 (0)20 7484 8046 or 8047

E-mail [admin@pathsoc.org](mailto:admin@pathsoc.org)

Website [www.pathsoc.org](http://www.pathsoc.org)

**Royal Society of Medicine**

Address 1 Wimpole Street, London W1G 0AE

Telephone +44 (0) 20 7290 2965

E-mail [pathology@rsm.ac.uk](mailto:pathology@rsm.ac.uk)

Website [www.rsm.ac.uk](http://www.rsm.ac.uk)

**FUTURE MEETINGS**

**Pathological Society**

2021 26–27 January, London, UK

**Winter Meeting**

4<sup>th</sup> Joint Meeting of the Royal Society of Medicine and the Pathological Society

2021 6–8 July, Manchester, UK

**Manchester Pathology 2021**

13<sup>th</sup> Joint Meeting of the British Division of the IAP and the Pathological Society — *including Trainee and Undergraduate Programmes.*

## EARLY BIRD REGISTRATION FEES

UNTIL 23.59 ON WEDNESDAY 13 NOVEMBER 2019

Delegate Type	Fee Category	1 Day	2 Days
RSM Member or Path Soc Member	Fellow / Ordinary Member	£ 126.00	£ 226.80
	Associate / Senior Member	£ 48.00	£ 86.40
	Trainee / Path Soc Concessionary Member	£ 48.00	£ 86.40
	Student / Path Soc Undergraduate Member / Foundation Doctor Members	Free	Free
	Retired	£ 48.00	£ 86.40
Non-Member	Consultant / GP / Ordinary Non-Member	£ 210.00	£ 378.00
	Allied Health Professional / Nurse / Midwife	£ 80.00	£ 144.00
	Trainee / Concessionary Non-Member	£ 80.00	£ 144.00
	Student / Undergraduate Non-Member	£ 40.00	£ 72.00
<b>Dinner (Tues 21 Jan)</b>	All categories <i>except</i> Undergraduates	£ 65.00	
	Undergraduate Delegates only	£ 30.00	

### REGISTRATION

Registration is **online only**.  
Please use the Direct Link to the right.

[Registration](#)

### ADVANCE REGISTRATION

Advance registration will close on **Sunday 19 Jan 2020 (23.59 hrs UK time)**.  
After this date delegates may register on-site on arrival at the Conference.

### CANCELLATIONS

Full refunds for event bookings will be offered for cancellations made in writing up to 48 hours after payment has been received, provided there are at least four working days before the event. After 48 hours refunds will only be offered for fees over £10 and a 15% administration charge will be incurred. No refunds will be offered for cancellations made within four working days of an event. For further details please visit the RSM website, via the following URL:

<https://www.rsm.ac.uk/terms-and-conditions.aspx>

### REFRESHMENTS

All refreshments, including lunch, are included in the daily registration fee.

<b>STANDARD REGISTRATION FEES</b> FROM 00.01 ON THURSDAY 14 NOVEMBER 2019			
Delegate Type	Fee Category	1 Day	2 Days
RSM Member or Path Soc Member	Fellow / Ordinary Member	£ 162.00	£ 291.60
	Associate / Senior Member	£ 78.00	£ 140.40
	Trainee / Path Soc Concessionary Member	£ 78.00	£ 140.40
	Student / Path Soc Undergraduate Member / Foundation Doctor Members	Free	Free
	Retired	£ 78.00	£ 140.40
Non-Member	Consultant / GP / Ordinary Non-Member	£ 270.00	£ 486.00
	Allied Health Professional / Nurse / Midwife	£ 130.00	£ 234.00
	Trainee / Concessionary Non-Member	£ 130.00	£ 234.00
	Student / Undergraduate Non-Member	£ 90.00	£ 162.00
<b>Dinner</b> <b>(Tues 21 Jan)</b>	All categories <i>except</i> Undergraduates	£ 90.00	
	Undergraduate Delegates only	£ 30.00	

**DELEGATE ENROLMENT (AT THE MEETING)**

Enrolment at the Delegate Reception Desk will take place from 08.30 hrs on Tuesday 21 January and on Wednesday 22 January 2020.

**CONCESSIONS**

Delegates from categories: **Non-Member Undergraduate Student** and **Non-Member Concessionary** must provide an identification document as proof of their student or trainee status, including NTN's where applicable. Proof must be by way of a statement from the Head of Department (see below):

A template document is available on our website: [www.pathsoc.org](http://www.pathsoc.org)

Documents to be uploaded via the registration system,

or emailed to: [pathology@rsm.ac.uk](mailto:pathology@rsm.ac.uk)

**RSM CONTACT FOR REGISTRATION QUERIES**
**Royal Society of Medicine**

Address 1 Wimpole Street, London W1G 0AE

Telephone +44 (0) 20 7290 3941

E-mail [pathology@rsm.ac.uk](mailto:pathology@rsm.ac.uk)

Website [www.rsm.ac.uk](http://www.rsm.ac.uk)

▶ 08.30 – 09.25

Foyer

**REGISTRATION AND COFFEE**

▶ 09.25 – 09.30

Guy Whittle Auditorium

**WELCOME AND INTRODUCTION**

Prof MJ Arends

*University of Edinburgh, Edinburgh, UK; General Secretary, Pathological Society*

Dr EW Benbow

*University of Manchester, Manchester, UK; Chair, Education Sub-Committee, Pathological Society*

▶ 09.30 – 11.10

Guy Whittle Auditorium

**SYMPOSIUM*****Digital and Optical Pathology***

Chair: Dr P Bankhead, University of Edinburgh, Edinburgh, UK

Prof CS Herrington, University of Edinburgh, Edinburgh, UK

09.30–10.00 ***PathLAKE and Computational Pathology: Education, Analytics and Discovery***

Prof C Verrill

*University of Oxford, Oxford, UK*

10.00–10.30 **[S1] *QuPath and Image Analysis in Pathology***

Dr P Bankhead

*University of Edinburgh, Edinburgh, UK*

10.30–11.00 **[S2] *Intelligent Software Solutions Support and Enable Pathologists to Guide Clinically Relevant Decisions***

Prof R Huss

*Pathology Consultant, Institut für Pathologie, Universitätsklinikum Augsburg, Germany*

11.00–11.10 **Open Discussion**

▶ 11.10 – 11.45

Atrium / Cavendish Room

**REFRESHMENTS, TRADE EXHIBITION AND POSTER VIEWING**

▶ 11.45 – 12.45

Guy Whittle Auditorium

**SYMPOSIUM*****Digital and Optical Pathology*** (continued)

11.45–12.15

**[S3] *Optical Imaging: Beyond the Microscope***

Prof CS Herrington

*University of Edinburgh, Edinburgh, UK*

12.15–12.45

***Digital Pathology and Image Analysis in Tissue Biomarker Research: Algorithms from Research into Clinical Practice***

Mr P O'Reilly

*Head of AI Research, Phillips, Belfast, UK*

▶ 12.45 – 13.45

Atrium

**LUNCH AND TRADE EXHIBITION**

▶ 13.00 – 13.45

Atrium / Cavendish Room

## POSTER VIEWING AND CHAIRMAN'S ROUNDS

GROUP – CATEGORY	POSTER NUMBER	CHAIR
1 – Autopsy/Forensic (2); Breast (5)	P1–P8 *	Dr EW Benbow, Manchester; Dr E Provenzano, Cambridge
2 – Cardiovascular/Pulmonary (3); Haematopathology (4); Osteoarticular/Soft Tissue (1);	P9–P16	Dr S Dojcinov, Cardiff; Prof M-Q Du, Cambridge
3 – Cellular/Molecular	P17–P26	Prof M Ilyas, Nottingham; Chair to be confirmed
4 – Dermatopathology	P27–P35	Dr C Heffron, Cork; Dr N Kirkham, Dubai
5 – Experimental Tumour Path (2); Neonatal/Paediatric (1); Technical Advances (5)	P36–P43	Prof C Bacon, Newcastle; Dr T Kendall, Edinburgh
6 – Education (2); Gastrointestinal 1 (7)	P44–P52	Prof RM Feakins, London; Prof GI Murray, Aberdeen
7 – Gastrointestinal 2 (5); Hepatobiliary/Pancreas (2)	P53–P60 *	Prof AD Burt, Newcastle; Dr NP West, Leeds
8 – Genitourinary (5); Gynaecological (2); Renal (1)	P61–P68	Prof CS Herrington, Edinburgh; Dr S Manek, Oxford
9 – Endocrine (1); Head and Neck (4); Neuropathology/Ophthalmic (3)	P69–P76	Dr G Betts, Manchester; Prof P van der Valk, Amsterdam, NL

\* Posters P3 and P58 have been withdrawn.

▶ 13.45 – 15.15

Guy Whittle Auditorium

## SYMPOSIUM

**Education Session – Pathologists Must Teach!**

Chair: Dr EW Benbow, University of Manchester, Manchester, UK;  
Chair, Education Sub-Committee, Pathological Society  
Dr L Brownlee, UCL, London, UK; Member of Trainees'  
Sub-Committee, Pathological Society

13.45–14.05 **Assessment Drives Learning: Pathology in the National Licensing Examination**

Prof M Gurnell  
University of Cambridge, Cambridge, UK

▶ 13.45 – 15.15 — *continued*

Guy Whittle Auditorium

14.05–14.25 **[S4] Role Modelling in Medical Education**

Dr V Passi  
King's College London, London, UK

14.25–14.45 **[S5] Why I Want to be a Pathologist**

Miss AFI Matkowski  
Manchester University NHS Foundation Trust, Manchester, UK  
Mr S Seth  
Queen Elizabeth University Hospital, Glasgow, UK

14.45–15.05 **How Trainees Become Teachers**

Prof CR Melville  
Medical Director and Director Education and Standards, GMC; University of Manchester, Manchester, UK

15.05–15.15 **Panel Discussion**

## ▶ 15.15 – 15.45

Atrium / Cavendish Room

**REFRESHMENTS, TRADE EXHIBITION AND POSTER VIEWING**

## ▶ 15.45 – 16.30

Guy Whittle Auditorium

**PLENARY ORAL PRESENTATIONS**

Chair: Prof HI Grabsch, University of Maastricht Medical Center+, Maastricht, NL; Meetings Secretary, Pathological Society  
Prof CS Herrington, University of Edinburgh, Edinburgh, UK;  
Editor-in-Chief, *Journal of Pathology*

15.45–16.00 **[PL1] Ethanol Induction of Colorectal Tumours and Precursors in a Mouse Model of Lynch Syndrome**

© G Cerretelli; Y Zhou; MJ Arends  
University of Edinburgh, Division of Pathology, Institute of Genetics and Molecular Medicine, Edinburgh, UK

16.00–16.15 **[PL2] KLF2 is a Global Regulator of NOTCH2 and NF-κB and Mutation Abolishes its Repressor Activities**

© MA Rust; M Wang; J Gao; F Cucco; A Clipson; Z Chen; MQ Du  
University of Cambridge, Cambridge, UK

16.15–16.30 **[PL3] XRCC1 is a Predictor of an Aggressive Phenotype in Pre-Invasive Ductal Carcinoma In Situ (DCIS) and Invasive Breast Cancer (IBC)**

© A Al-Kawaz; R Ali; M Toss; I Miligy; K Mesquita; A Green; E Rakha; S Madhusudan  
University of Nottingham and City Hospital, Nottingham, UK

▶ 16.30 – 16.40

Guy Whittle Auditorium

**PRIZE PRESENTATION****Jeremy Jass Prize for Research Excellence in Pathology in 2018  
Presented by *The Journal of Pathology***

S Watson, V Perrin, D Guillemot, S Reynaud, J-M Coindre, MKaranian, J-M Guinebretière, P Freneau, F Le Loarer, M Bouvet, L Galmiche-Rolland, F Larousserie, E Longchamp, D Ranchere-Vince, G Pierron<sup>†</sup>, O Delattre<sup>†\*</sup> and F Tirode<sup>†\*</sup>.

<sup>†</sup> Co-Senior Authors; \* Co-Corresponding Authors

Transcriptomic definition of molecular subgroups of small round cell sarcomas.

*J Pathol* 2018; **245**: 29–40. DOI: 10.1002/path.5053

▶ 16.45 – 17.25

Guy Whittle Auditorium

**THE PATHOLOGICAL SOCIETY OF GREAT BRITAIN & IRELAND  
15<sup>th</sup> GOUDIE LECTURE**

Chair: Prof MJ Arends, University of Edinburgh, Edinburgh, UK;  
General Secretary, Pathological Society

**[S6] *Autophagy and Neurodegeneration***

Prof DC Rubinsztein

*Cambridge Institute for Medical Research, UK Dementia Research Institute,  
University of Cambridge, Cambridge, UK*

▶ 17.25 – 17.30

Guy Whittle Auditorium

**CLOSURE OF DAY 1**

Prof MJ Arends

*University of Edinburgh, Edinburgh, UK*

▶ 19.00 – 23.00

Churchill Cabinet War Rooms, London

**SOCIETY DINNER**

There is time before the Dinner (which starts at 20.00) to allow for viewing the Museum (audio guides will be available).

Dinner ends at 23.00 (the venue must be vacated by 23.00).



▶ 08.30 – 09.05

Foyer

**REGISTRATION AND COFFEE**

▶ 09.05 – 09.10

Guy Whittle Auditorium

**WELCOME AND INTRODUCTION**

Prof CS Herrington

*University of Edinburgh, Edinburgh, UK; Editor-in-Chief, Journal of Pathology*

▶ 09.10 – 10.40

Guy Whittle Auditorium

**SYMPOSIUM*****Molecular Pathology: The Future (Part 1)***

Chair: Prof T Bosse, Leiden University Medical Centre, Leiden, NL

Dr NP West, University of Leeds, Leeds, UK

09.10–09.45

**[S7] *The Challenges of Interpreting Genetic Variants***

Dr IM Frayling

*University of Cardiff, Cardiff, UK*

09.45–10.30

**[S8] *Molecular Genetics of Colorectal Cancer***

Prof I Tomlinson

*Edinburgh Cancer Research Centre, Edinburgh, UK*

10.30–10.40

**Open Discussion**

▶ 10.40 – 11.15

Atrium / Cavendish Room

**REFRESHMENTS, TRADE EXHIBITION AND POSTER VIEWING**

▶ 11.15 – 12.40

Guy Whittle Auditorium

**SYMPOSIUM*****Molecular Pathology: The Future (Part 2)***

11.15–11.45

***Molecular Pathology of Endometrial Carcinoma***

Prof T Bosse

*Leiden University Medical Centre, Leiden, NL*

11.45–12.30

**[S9] *The Genomics of Dermatological Cancer***

Dr D Adams

*Wellcome Sanger Institute, Hinxton, UK*

12.30–12.40

**Open Discussion**

## ▶ 12.40 – 13.05

Guy Whittle Auditorium

**'RAPID-FIRE' ORAL PRESENTATIONS**

Chair: Prof AM Flanagan, UCL and Royal National Orthopaedic Hospital;  
President, Pathological Society

- 12.40–12.45 **[P57] *Investigating the Stem Cell Dynamics of Gastric Intestinal Metaplasia In Vivo***  
P AA Abbas; JLJ Jaffe; WW Waddingham; MJ Jansen  
*University College London, London, UK*
- 12.45–12.50 **[P22] *Overexpression of MicroRNA 21 Leads to Increased Glial Scarring in Spinal Cord Injury***  
P PP Jiju  
*University of Leeds, Leeds, UK*
- 12.50–12.55 **[P63] *Immune Profiling of the Tumour Microenvironment in Prostate Cancer Using Multiplex Immunofluorescence***  
P C Ntala<sup>1</sup>; J Salmond<sup>2</sup>; AV Teodosio<sup>3</sup>; L Officer<sup>3</sup>; GN Thalmann<sup>4</sup>;  
J Le Quesne<sup>3</sup>; HN Leung<sup>1</sup>  
<sup>1</sup>*Beatson Institute for Cancer Research, University of Glasgow, Glasgow, UK;*  
<sup>2</sup>*NHS Greater Glasgow and Clyde, Glasgow, UK;* <sup>3</sup>*MRC Toxicology Institute, Leicester, UK;*  
<sup>4</sup>*University of Bern, Bern, Switzerland*
- 12.55–13.00 **[P30] *Detection of BRAF V600E Mutation in Melanoma: Comparison Between Immunohistochemistry and Three Gene Mutation Detection Methods***  
P W Xu<sup>1</sup>; L Shaimaa<sup>2</sup>; F Wakkas<sup>3</sup>; H James<sup>3</sup>; S Declan<sup>3</sup>; I Mohammad<sup>3</sup>;  
E Somaia<sup>2</sup>  
<sup>1</sup>*School of Medicine, University of Nottingham, Nottingham, UK;* <sup>2</sup>*Dept of Cellular Pathology, Queen's Medical Centre, University of Nottingham, Nottingham, UK;* <sup>3</sup>*Division of Cancer and Stem Cell, Faculty of Medicine and Health Sciences, University of Nottingham, Nottingham, UK*
- 13.00–13.05 **[P38] *Cancer Predisposition Syndromes: An Important Consideration in Paediatric Oncopathology***  
P S Prendergast; M McDermott; J Pears; A O'Marcaigh; S Lynch;  
A Green; MJ O'Sullivan  
*Children's Health Ireland, Crumlin, Dublin, Ireland*

## ▶ 13.10 – 14.00

Atrium / Cavendish Room

**LUNCH, TRADE EXHIBITION AND POSTER VIEWING**

▶ 14.00 – 14.05

Guy Whittle Auditorium

**'RAPID-FIRE' ORAL PRIZE ANNOUNCEMENTS**

▶ 14.05 – 15.15

Guy Whittle Auditorium

**SYMPOSIUM*****Molecular Pathology: The Future (Part 3)***

Chair: Prof CSHerrington, University of Edinburgh, Edinburgh, UK;

Editor-in-Chief, *Journal of Pathology*

Dr T Kendall, University of Edinburgh, Edinburgh, UK

14.05–14.35 **[S10] *Targeting Regulated Cell Death in Disease: Apoptosis and Beyond***

Prof SW Tait

*Cancer Research UK Beatson Institute, Glasgow, UK*

14.35–15.05 **[S11] *Molecular Pathology of Breast Cancer***

Dr E Provenzano

*Addenbrookes Hospital, Cambridge, UK*

15.05–15.15 **Open Discussion  
Closure of Meeting**

▶ 15.15 – 15.35

Atrium / Cavendish Room

**REFRESHMENTS**

**TRADE EXHIBITION**

*Correct at time of going to press*

**The Pathological Society of Great Britain & Ireland and The Royal Society of Medicine wish to acknowledge the support of the following companies:**

**MAVIG**

**PATHOGNOMICS LIMITED**

**PENTLAND MEDICAL**

**PROCESS RECORD SLIDE (PRS)**

Please note that none of the companies listed have had any influence or involvement over the agenda, content or organisation of this meeting.

**ABSTRACT REVIEWERS**

Dr AF Amary, London	Prof M Ilyas, Nottingham
Prof C Bacon, Newcastle	Prof T Jacques, London
Dr C Bellamy, Edinburgh	Dr T Kendall, Edinburgh
Dr EW Benbow, Manchester	Dr M Khan, Nottingham
Prof DM Berney, London	Dr N Kirkham, United Arab Emirates
Dr G Betts, Manchester	Dr M Loughrey, Belfast
Prof T Brenn, Calgary	Dr S Manek, Oxford
Dr L Browning, Oxford	Prof GI Murray, Aberdeen
Dr RJ Byers, Manchester	Prof AG Nicholson, London
Prof SS Cross, Sheffield	Dr M Osborn, London
Dr S Dojcinov, Cardiff	Dr S Paine, Nottingham
Prof MQ Du, Cambridge	Prof SE Pinder, London
Prof RM Feakins, London	Dr D Poller, Portsmouth
Prof AJ Freemont, Manchester	Prof ISD Roberts, Oxford
Prof AM Hanby, Leeds	Prof M Sheaff, London
Prof TR Helliwell, Liverpool	Prof M Sheppard, London
Prof CS Herrington, Edinburgh	Prof P van der Valk, Amsterdam
Prof SG Hubscher, Birmingham	Prof KP West, Leicester

<b>A</b>		<b>J</b>		<b>T</b>	
Abbas, AA.....	P57	Jaffe, JLJ.....	P57	Tadrous, PJ.....	P43
Abreu, M.....	P42	James, M.....	P65	Tafliku, BT.....	P29
Adams, D.....	S9	Jenkins, CB.....	P10	Tagliavini, G.....	P61
Aherne, SA.....	P55	Jensen, MP.....	P75	Tait, SW.....	S10
Aitken, SJ.....	PL4	Jiju, PP.....	P22	Tang, LWC.....	P68
Al-Kawaz, A.....	PL3			Tomlinson, I.....	S8
Alnabulsi, A.....	P54	<b>K</b>		Triantafyllou, A.....	P70
Arora, I.....	P26	Keeling, E.....	P32, P33		
		Keogh, AK.....	P9	<b>U</b>	
<b>B</b>				Uraiby, H.....	P66
Bacon, CM.....	P12	<b>L</b>			
Bankhead, P.....	S1	Lawson, HMR.....	P45	<b>V</b>	
Beauchamp, K.....	P31	Lenouvel, CM.....	P62	Vira, J.....	P34
Beg, RN.....	P23	Liddy, R.....	P59		
Bejan, LB.....	P37	Liyanarachchi, KS.....	P44	<b>W</b>	
Borbora, A.....	P1			Waise, S.....	P19
Boyce, BF.....	P16	<b>M</b>		Wang, K.....	P51
		Ma, Y.....	P76	Williams, CJM.....	P21
<b>C</b>		Malone, V.....	P8		
Cai, J.....	P25	Maqbool, H.....	P64	<b>X</b>	
Cerretelli, G.....	PL1	Matkowski, AFI.....	S5	Xiang, J.....	P50
Craig, SG.....	P53	McCance, H.....	P52	Xu, W.....	P30
Cross, G.....	P69	McMahon, DJB.....	P7		
		Mistry, SK.....	P15	<b>Y</b>	
<b>D</b>				Yeong, JPS.....	P49
Davis, OD.....	P11	<b>N</b>		Young, C.....	P40
Du, PY.....	P14	Nimir, M.....	P20		
		Nithinantharajan, A.....	P24		
<b>E</b>		Ntala, C.....	P63		
El-Jabbour, J.....	P41	<b>O</b>			
Elsheikh, S.....	P28, P34	O'Connor, E.....	P73		
		Ondhia, C.....	P39		
<b>F</b>				<b>P</b>	
Fittall, MW.....	P17, P18	Passi, V.....	S4	Prendergast, S.....	P38
Frayling, IM.....	S7	Provenzano, E.....	S11	Pugh, MR.....	P13
<b>G</b>		<b>R</b>			
Gabbutt, C.....	P46	Rubinsztein, DC.....	S6		
Green, F.....	P2	Rust, MA.....	PL2		
Griffiths, R.....	P67			<b>S</b>	
Gunasekera, NR.....	P27	Sefcovicova, N.....	P47	Seth, S.....	S5
Gupta, GG.....	P4, P60, P72	Spencer, CE.....	P56, P71	Srirangam Nadhamuni, V.....	P74
		Stephens, ML.....	P35		
<b>H</b>					
Haller, M.....	P48				
Hamidinekoo, A.....	P6				
Haragan, AK.....	P36				
Herrington, CS.....	S3				
Hughes, K.....	P5				
Huss, R.....	S2				