



## **NOTES ON THE ANNUAL GENERAL MEETING WEDNESDAY 2 SEPTEMBER 2020, 13.00 HRS Held by Teams**

### **OVERVIEW OF THE YEAR**

In order to improve the timeliness of the meeting, brief verbal reports will be given at the Business Meeting. The following notes are designed to accompany the Annual General Meeting.

#### **AGENDA ITEM No 4: THE PRESIDENT'S REPORT**

##### **Foster and support future development of Academic Pathology**

A key focus of the Society is to provide support to improve the number of academics and the quality and status of academic pathology in the UK. We have adopted a strategic approach through five joined up initiatives of:

**Awards for Associate Honorary Membership were** awarded having been proposed by the Committee and accepted by the membership by ballot:

*Mr Eric Rothbarth*, Chairman of The Jean Shanks Foundation – awarded for *distinction in supporting pathological science*. Eric has been instrumental establishing the Jean Shanks and Path Soc Partnership.

*Mr Keith Miller*: awarded for this commitment to UK pathology and advancement of immunocytochemistry since its introduction as a technique for research and rapidly thereafter into clinical practice in the early 1980s.

**The undergraduate engagement programme**, formerly run by Dr Richard Byers during his tenure as General Secretary, the Society has co-opted Dr Gemma Petts, Liverpool into a new position on the Committee as Undergraduate Lead.

We are very grateful to Dr Richard Byers for his longstanding commitment to the society and the Undergraduate programme in particular.

This programme seeks to broaden the base of our recruits into pathology and focus on attracting the brightest and best from medical schools. The undergraduate strategy includes a formal undergraduate committee chaired by Roberta Turner from Leeds, who will retire after the AGM, and will be succeeded by Amber Matkowski, Manchester. The sub-committee which organises a range of undergraduate activities through the year and at our meetings. This programme is linked to the College and two taster meetings are normally held each year with one organised by the College in the South which we part fund and a standalone meeting for Histopathology run by the Society outside of London. This year's event scheduled for April had to be cancelled due to the lockdown imposed as a result of the Covid-19 pandemic. We have previously run these in Leeds and Manchester, one in April this year. These are very successful with excellent feedback and generate a lot of follow up opportunities for academic engagement. The programmes and feedback are on the [website](#). If your centre wishes to run one of these please contact Gemma Petts.

We continue to promote [The ambassador programme](#) that seeks to join up the undergraduate initiatives across the country and give bright young people experience of pathology in the workplace so that their knowledge of what we do, and its importance, might lead to greater interest in pathology as a career and in academic pathology in particular. This initiative is managed by the Education Sub-committee Chair.

##### **Jean Shanks Pathological Society Partnership for Developing Academic Pathologists**

Joint funding of £5m was committed for academic training of pathologists. This started in 2018 and is set to run for 5 years but may be extended because the programme was slow to start and because of the impact of Covid 19.

##### **Funding is available for the following schemes**

- JSPS PreDoctoral Research Bursary – 3 appointed since 2018
- JSPS Clinical PhD Fellowship Grants –3 appointed since 2018



- JSPS Clinical Lectureships / part time NIHR-type lectureships / junior fellowships: 4 years funding – 50% NHS : 50% JSPS (~£200,000.00 per individual)- 2 appointed since 2018
- Intermediate Fellowships – 50% funding with the other 50% covered by the NHS (~£100,000.00 per individual), *introduced in 2019 – 1 appointed to date.*
- Clinical Lecturer Support Grants – 1 appointed since 2018
- Clinical Academic Research Partnership grants for consultant grade pathologists.

New JSPS Studentships were introduced this year for Year 1 & Year 2 medical students to carry out a research project in pathology during vacation periods for a maximum of £1,000 per student for up to 50 students per year. Applications are submitted by the supervisor. 9 awards were made in the first round, the 2<sup>nd</sup> round in July was abandoned due to the Covid 19 pandemic.

A special thank you to the Trustee of the Jean Shanks Foundation for their continued support.

#### **The National Academic Trainee Network funded by the Jean Shanks Pathological Society Partnership**

The programme aims to educate young academics in the different career paths open to them and how best to place themselves to be successful academics. We have held nine meetings at various sites including Leeds, London, Nottingham, Edinburgh, Belfast, Maastricht, Cambridge, Dublin and Harrogate. We plan to run the next meeting as a Virtual event, date to be determined.

Attendance and feedback have been excellent, with around 20-30 attendees at each meeting. The programmes and feedback are on the [website](#) and I am indebted to our colleagues for the efforts they have made to create this internationally competitive cohort of young people who will be our future. A group of trainees from Germany & the Netherlands attended the NATNM meeting in Harrogate in 2019. We hope to continue the international component of these meetings to broaden the UK academic trainees' experiences.

I thank Professor Phil Quirke for running this programme.

**Lobbying for enhanced academic training.** We continue to work with the RCPATH to recognise the need for curriculum and culture change in cellular pathology training to future proof our discipline.

The trainees are especially important to the Society and I am very encouraged by the increasing numbers of trainee members and their direct participation in our activities. We need to inspire these young people that they can succeed in academic pathology and that they can and will do great things in the battle against disease. The trainee sections of our meetings programmes are highly valued, of exceptional quality and very well attended. We must continue to work with the trainees' subcommittee to enhance these activities. We thank Caroline Young for her outstanding leadership since taking over as Chair of the trainees' subcommittee in June 2017 and she will be retiring after the AGM this year when Dr Kate Marks, Leeds will succeed Caroline, having been duly elected by the Trainee's Sub-committee.

#### **Links with other professional bodies**

We continue to work closely with the BDIAP. At our meetings of the Officers of the Society and the BDIAP, we have discussed greater cooperation and collaboration. Many of our members are members of the BDIAP and vice versa. There is a joint desire to work together and with the RCPATH to improve the research, training and professional environment for pathologists in the UK and for those overseas members and affiliates who look to the UK for guidance.

We also work closely with the CRUK through the jointly funded CRUK/Path Soc Predoctoral Research Bursary scheme.

#### **ACCEA**

The Society continues to offer its assistance to Members as allowed by the ACCEA. Due to the Covid-19 pandemic, the ACCEA has postponed the 2020 Round and the deadline will now be in January 2021. The Society will contact members when the system has been opened. It is very hard to obtain these awards. Please remember that you have to score well in all areas if you are going to reach the highest levels. Thus, research and education at all levels must be undertaken by those who aspire to these awards.



I would recommend that those submitting applications prepare these a long time in advance and ask a colleague to read them. Remember it is important to focus on the impact of your efforts; being on a committee is not sufficient – it is all about what you achieved on that committee.

### **2018 Finance & General Purposes Sub-committee (FGP) Strategy Meeting and Committee Awayday**

The Committee continue to follow the strategy agreed, with our main focus being as follows.

It was disappointing not to be able to hold our Away Day at which the following issues would have been discussed.

- Develop effective strategies to support and develop academic pathology.
- Greater engagement with other learned Societies.
- Greater engagement with undergraduate medical students with continued support of the co-sponsored Summer School with the RCPATH and the BDIAP as well as expanding the initiative to a second meeting in the north. These were cancelled this year due to the COVID-19 pandemic.
- Promotion of the role of molecular pathology at research and service levels, particularly amongst trainee pathologists.
- Maintain a strong portfolio of research support at grant and meeting levels.
- Develop an educational strategy to expand support at undergraduate, postgraduate and CPD levels.
- Continue our engagement with the Japanese and to concentrate on building engagement with European pathologists and societies.
- Remain an effective Society by implementing modern communication platforms for engaging with members and developing educational programmes.

### **Journal of Pathology**

Our journal maintains its leading position as the highest-ranking monthly pathology research journal and I would like to thank Simon Herrington, Richard Poulosom, the Editorial Board and referees for continuing to take the journal forward in a highly competitive commercial market. A full update on the Journal can be found on pages 13-17.

### **Journal of Pathology: Clinical Research**

This is the companion Journal to the Journal of Pathology; it has a more clinical focus and is open access and on-line only. Under the Editorship of Simon Herrington and his colleagues, the journal has PubMed and Web of Science listing and we are pleased to announce that it has achieved an Impact Factor of 3.489. We continue to have great hopes for this sister Journal which meets a need in the market for translational research and, as a fully Open Access title, provides the Society with a vehicle to support publishing in pathology through the current challenges in academic publishing. A full update on this Journal can be found on pages 18-20.

### **Meetings**

We are pleased to continue the annual Joint Meetings with the British Division of the IAP (BDIAP) creating a mutually beneficial engagement to bring all Pathologists together in one annual meeting, the next will be Manchester Pathology 2021, 6-8 July, and will be hybrid format meeting incorporating face to face and virtual sessions. The winter meetings will continue following the highly successful 3<sup>rd</sup> Joint Meeting with the Royal Society of Medicine in London in January this year and the 4<sup>th</sup> Joint Winter Meeting is planned for 25-26 January 2022 as the 2021 Meeting had to be cancelled due to the uncertainty surround the Covid-19 pandemic. Thank you to Simon Herrington, Mark Arends and Heike Grabsch and the Trainee & Undergraduate teams for organising the 2020 Winter Meeting. Bi-annual meetings are essential to the future of academic pathology not only to sustain our momentum but to stay at the forefront of academic research. We will continue to engage with the Japanese Pathology Society.

### **Retirements**

Dr Emyr Benbow will retire this year as Chair of the Education Sub-committee and Dr Abhik Mukherjee will take up office after the AGM, having been elected in 2019.

No officers are retiring this year, although Paul van der Valk's term as Dutch Path Soc Rep on the Committee will end after the Committee meeting, to be succeeded by Carolien van Duerzen.

**Thank you**

Running the Society is a team effort, but I would particularly like to thank our administrative staff Ros Pitts and Julie Johnstone, who have experienced challenging times over the last 5 years. Having had to move office several times before our permanent move to the new College building in April 2019. We should not underestimate the time and effort that this has taken our loyal staff. Indeed, I suspect that many of us hardly noticed what was going on in the background as the Society continued to be organised as efficiently as ever. This is a great reflection on Ros and Julie.

I am also grateful to the Officers and committee members and also everybody who has given up their time to help the Pathological Society move forward over the year. The future is exciting, but we are at a critical time if we are to sustain and grow the great academic traditions of UK and Irish academic pathology.

**Adrienne M Flanagan, July 2020**

**AGENDA ITEM No 5: GENERAL SECRETARY'S REPORT****5.1 Society Lectures, Medals and Awards**

Members are referred to the General Secretary's notices in the Agenda document for deadlines for nomination/application for this year's lectures, medals and awards.

**5.2 Membership**

I am pleased to report that membership numbers have increased once again and, at the time of writing, stand at 2253. As last year, this reflects not only that more people are joining the Society but also that concessionary members are converting to ordinary membership when they move into career grade posts and there is a continuing growth in Undergraduate Associate Membership and Foundation Associate Membership.

**5.3 Undergraduate Involvement/ Undergraduate Associate Membership**

The Undergraduate network is now fully embedded in the Society's mission. Roberta Turner is Chair of the Undergraduate Sub-committee and attends FGP and Committee Meetings as the Undergraduate representative. Amber Matkowski has been nominated as the Chair-elect by the Undergraduates and will succeed Roberta after the AGM on 2 September 2020.

Since the introduction of Undergraduate Associate Membership in 2015, the Society now has 480 Undergraduate members. Students need to be members of the Society in order to apply for the Undergraduate Bursary, Intercalated Degree grant and any other grant schemes as appropriate. Undergraduate Associate Membership is free of charge.

Last year there was a successful full day Undergraduate session at the Leeds Pathology Meeting held in Harrogate and this is now a permanent feature of the summer joint meetings with the BDIAP.

Dr Gemma Petts was co-opted as the Undergraduate Lead for the Society in February 2020.

Dr Gemma Petts and Prof Sarah Coupland had organised a Undergraduate event in April this year, which had to be cancelled as a result of the COVID-19 pandemic; it is hoped that this meeting can be reinstated next year, albeit potentially in a different format.

**5.4 Foundation Associate Membership**

Foundation Associate Membership was introduced in 2018/19 and we currently have 125 Foundation Associate members. Undergraduate Associate membership converts to Foundation Associate membership upon completion of a medical degree. Foundation Associate Membership is free of charge. Undergraduate Associate members are asked to contact the Society Administrator around the time of completion of a medical degree to confirm this change in membership status.

**5.5 Special Resolution to amend Articles 37.2 and 39**

PREVIOUS: 37.2.4 up to three co-opted Trustees, appointed in accordance with Article 39.

For the avoidance of doubt, no person is eligible to hold more than one Trustee position at any time.

39. Co-opted Trustees

39.1 The Committee may appoint up to three persons to be co-opted Trustees, who need not be members of the Society.



AMEND TO: 37.2.4 up to six co-opted Trustees, appointed in accordance with Article 39.  
For the avoidance of doubt, no person is eligible to hold more than one Trustee position at any time.

39. Co-opted Trustees

39.1 The Committee may appoint up to six persons to be co-opted Trustees, who need not be members of the Society.

**5.6 Website Strategy**

The content of the website continues to be reviewed. Website policies are published on the Society’s website. The Society is in the process of appointing a Website/Digital Adviser to assist with redesigning and redevelopment of the website, as well as other future initiatives that are planned. If members have suggestions for improvement of the website, please contact [admin@pathsoc.org](mailto:admin@pathsoc.org).

**Mark Arends, July 2020**

**AGENDA ITEM No. 6 – THE TREASURER’S REPORT**

The Society remains in a satisfactory financial state in 2019 even though the Society is reporting an excess of income over expenditure of £586,933 (2018 loss of £1,057,958). This is due to an increase in grants awarded reflecting The Society’s partnership with the Jean Shanks Foundation and a decrease in the value of the Society’s investment Portfolio which reflects performance of the financial markets in 2019. The summary position is detailed in the accounts as follows:

*Income has increased for the year under review to £1,369,508 (2018: £1,268,407) primarily due to an increase in income from all the sources. Subscription income is relatively stable at £83,282 (2018: £78,134); on its own this income would not enable the Society to function. The main areas of expenditure continue to be charitable grants £861,662 (2018: £988,059), Society meetings £467,322 (2018: £462,282) and support costs of the society £288,318 (2018: £283,340). Overall expenditure was £1,535,349 (2018 £1,679,249).*

We carry forward £8.31m, the majority of which is invested in a diversified portfolio managed by our financial advisors, Cazenove, the charities division of Schroders. The Trustees receive an annual presentation from Cazenove which includes a comparison with their peer group to ensure performance is broadly in line with expectations. The level of investments in the portfolio has continued to allow the Society to commit to the major five year investment jointly with the Jean Shanks Foundation to support a series of research schemes to facilitate trainees in pathology to develop their academic and research careers. These range from early career support through to support for late stage trainees applying for independent investigator awards. These grants offer two application deadlines annually.

Our main source of income remains the Journal of Pathology which contributed £840,628 to the Society budget. This is due to the continued careful stewardship of our Editor-in-Chief, Simon Herrington, his Senior and Associate Editors and the production team at Wiley. The Society gratefully acknowledges all their hard work. The Trustees and the Editor in-Chief have agreed to further strengthen the editorial team as the Journal is crucial to the success of the Society. The future development of open access academic publishing represents an increasing threat to income from The Journal of Pathology.

Under the leadership of the President, the Society continues to support its strategic development to increase interactions with trainees in academic pathology posts and also with undergraduate medical students. Financial support has continued to be made available to support the highly successful series of national academic trainees’ network meetings and some underused grants have been realigned to support the Undergraduate Committee.

**Graeme Murray, July 2020**

**AGENDA ITEM No. 7 – MEETINGS SECRETARY’S REPORT**

**Leeds Pathology 2019, Harrogate**

This 12<sup>th</sup> Joint meeting with the BDIAP was held at the Harrogate Convention Centre. This proved to be a successful, enjoyable and well attended event at an excellent venue. The Social Events were very well attended and received.

- Abstracts submitted 242
- Total number of delegates 569 including invited speakers from 27 countries
- Delegate breakdown:





The best undergraduate research report was awarded to Emma Bennion-Pedley (University of Cambridge), on **'Tick immunity research internship'**.

The best undergraduate clinical report was awarded to Heather Lawson (University of Sheffield), on **"Madagascar Medical Expeditions"**.

#### **Undergraduate Essay Competition**

This essay prize is offered annually, and the winner is invited to receive the £500 prize at the Society winter meeting the following year. Reiltn Tynan from the National University of Ireland was the winner of the 2019 essay prize entitled **'Without Pathology, medical education is futile'**. The presentation of £500.00 is yet to be confirmed.

The title of the 2020 prize essay is: **"A clinical pathologist on every paper.....the importance of pathologists in translational medical research"**

The winning essay from 2019 can be found on the Society website.

#### **Intercalated BSc**

12 applications were received from students from 8 medical schools: 3 from the University of Bristol, 2 from University of Leeds, 2 from University of Manchester, 1 from University of Sheffield, 1 from University of Birmingham, 1 from University College Dublin, 1 from Newcastle University & 1 from Queen's University Belfast. 10 applications were funded. This represents a total spend of £144,190 for 2019.

It is emphasised that each student receiving a Society award would be expected to submit their work, either as an oral presentation or poster, at the winter meeting following completion of their degree. Supervisors would be politely reminded to encourage their students to do this.

#### **Student Society Bursary Scheme**

No applications were received in 2019.

#### **Education Grant scheme**

There were no Education Grant applications in 2019

#### **Pathological Society Winter School**

The Winter School ran under the leadership of Catherine Horsfield and Alison Winstanley for the eighth time. Due to microscopes no longer being available from the long-standing Pathological Society supplier the 2019 winter school was fully digital.

60 delegates attended and the winter school took place at the Hilton London Euston Hotel, a change from the usual venue Victoria Doubletree by Hilton due to renovation work. Of the 60 delegates, 1 was from Australia, 1 was from Hong Kong, 7 were from Ireland, and the remaining 51 were from the United Kingdom. The course was not without issues due the late arrival of the server and other connectivity issues which need to be resolved for the 2021 winter school.

#### **Golden Microscope Award**

Introduced in 2018 for 01 March 2019 deadline this award provides recognition of excellent post-graduate training in pathology.

4 nominations were received for three post-graduate trainers. The first (2019) Golden Microscope Award was awarded to Dr John Chapman, East Sussex & North Essex NHS Foundation Trust.

#### **Objectives for 2020-21**

Definite objectives for the Education Subcommittee are more difficult to set than ever, so our prime aim for the next year is to maintain the trajectories of our existing aims despite the continuing uncertainties about university closures and re-openings: my own institution estimates that the effort required to reverse lockdown will be about ten-fold that required to impose it in the first place. The Education Subcommittee has already instituted a policy of flexibility in respect of student funding, and many decisions about variations to individual projects



have been made and will continue to be required.

The Pathology Ambassador scheme continues, and participants will be encouraged to re-engage in a time of serious uncertainty for students, and their decisions about career plans are made in the context of distorted educational opportunities, at both undergraduate and post graduate levels. The presentation materials circulated to Ambassadors have been updated, to help them bring the benefits of PathSoc to the attention of students, and to support them to become contact points for students considering a career in pathology.

I expect to continue the effort to raise the profile of teaching within the Pathological Society, in the next major joint summer meeting with the BDIAP. Contacts established with the Medical Schools Council Assessment Alliance have enabled high quality multiple-choice questions (MCQs) on histopathology to be developed and entered into a national question bank, including questions suitable for inclusion in the finals examinations of all medical schools.

The Education Sub-committee would like to thank Prof Sarah Coupland who retired in 2019 and who has been a valuable member of the Education Sub-committee.

Welcome to Dr Alison Winstanley & Dr Abhik Mukherjee, Chair-elect of the Education Sub-committee

**Emyr W Benbow, July 2020**

### **AGENDA ITEM 8.2 REPORT OF RESEARCH SUB-COMMITTEE**

The Research Sub-committee is responsible for promoting and supporting the research aims of the Society. The Sub-committee meets twice a year, by teleconference, to discuss Research grant funding and any other matters of relevance to the Research aims of the Society. Minutes of these meetings are available from the Society office. An overview of the Research Sub-committee activity for 2019 is detailed below. The Society thanks *The Jean Shanks Foundation* and *Cancer Research UK* for their continued support of our joint schemes.

#### **Research Grant Schemes**

##### **Small Grants Scheme** (Deadline dates -1 April and 01 October)

The small grants scheme has four streams: Trainees Small Grant, Consultants' Pump Priming Small Grant, Post-Doctoral Collaborative Small Grant & the Trainee's Collaborative Small Grant.

15 applications were received (7 Consultants' Pump Priming Small Grant & 8 Trainee Small Grants) of which 7 were funded (2 Consultants' Pump Priming Small Grants & 5 Trainee Small Grants).

A total spend of £67 654.92

##### **PhD Studentships Scheme** (Deadline date 01 October)

A total of 4 applications were received in 2019. 1 PhD was awarded to Prof G Thomas, University of Southampton (*Targeting cancer-associated fibroblasts to improve therapeutic vaccination in head and neck cancer*).

A total spend of £105,000.00

##### **Career Development Fellowships Scheme**

From 2019 this award has been rebranded as the JSPS Clinical Lecturer Support Grant.

##### **International Collaborative Awards Scheme** (Deadline date 01 October)

3 applications were received of which 2 were funded from:

Prof M Du, University of Cambridge (*Thyroid Malt Lymphoma: Self-Harming to win T-Cell Help*)

Dr K Hughes, University of Cambridge (*A One Health approach to elucidating the pathogenesis of breast cancer*).

A total spend of £10,000.00

##### **Equipment Awards Scheme** (Deadline dates 01 April and 01 October)

A total of 6 applications were received in 2019 of which 4 were funded:

Dr E Meuser, Cardiff University, (*purchase a "PAULA" (Personal AUTomated Lab Assistant) live cell imaging system*)

Dr S Johnston, University of Nottingham, (*Integrating high-throughput genomic and proteomic technologies with pathology for use with clinical samples*)





Dr L Moore, Sanger Institute (*Purchase of an additional microtome*)

Dr J Griffin, University of Sheffield (*Purchase of a CFX96 Touch TM Real-Time PCR Machine*)

A total spend of £34 408.40

**Visiting Fellowships Scheme (Deadline dates 01 April and 01 October)**

1 application was received in 2019 which was not funded.

**Early Career Pathology Research Grants – Hodgkin & Leishman grants (Deadline dates 01 April and 01 October)**

No applications were received in 2019.

**Cuthbert Dukes Award (Deadline date 01 April)**

New for 2019 – the introduction of a medium-sized grant award aimed primarily to encourage early to mid-career pathology researchers in particular academic trainees in the early to mid-stages of their careers.

1 application was received and funded from Dr L Whitehouse, University of Leeds (*Investigating carious teeth to inform dentinogenic scaffolds*)

A total spend of £19 683.87

**Trainee Research Awards**

**Best Trainee Research Impact Award**

2 application were received. The 2019 Best Trainee Research Impact Award was awarded to Dr H Haynes, University of Bristol whose published work established for the first time that PPARalpha has a major role in driving glioblastomas progression.

A total spend of £500.00

**Best Trainee Research Paper Award**

1 application was received in 2019 which was not funded.

**The Jean Shanks Foundation/Pathological Society (JSPS) Joint Research Grants (Deadline dates 01 April and 01 October)**

Two rounds of interviews were held this year (January 2020, June 2020) for the higher value schemes (Clinical PhD Fellowship, Clinical Lecturer Grant, Intermediate Research Fellowship, Clinical Academic Research Partnership Grant).

**JSPS Pre-Doctoral Bursary**

A total of 2 applications were received in 2019; both were funded but later declined as offers were accepted from other funding bodies.

**JSPS Clinical PhD Fellowship**

A total of 2 applications were received in 2019. Both applications were funded:

Dr H Crane, University of Sheffield and Dr A Bowes, Barts & The London.

Both offers of funding were later declined as offers were accepted from other funding bodies.

**JSPS Clinical Lecturer Support Grant**

1 application was received and funded from Dr S Brockmoller, University of Leeds (*The use of Stochastic Optical Reconstruction Microscopy (STORM) in formalin-fixed paraffin-embedded tissue to improve the assessment of ligand-receptor interaction and biology in colorectal cancer*).

A total spend of £99 831.77

**JSPS Clinical Lecturer Grant - New for 2019**

2 applications were received and funded:

Dr S Waite, University of Southampton (*Illuminating the complex rearrangement landscape of sarcoma*).

Dr J McCaffrey, University of Cambridge (*Mitochondrial dysfunction in chronic kidney disease*).

A total spend of £404 408.00

**JSPS Intermediate Research Fellowship - New for 2019**

1 application was received and funded from Dr L Moore, Wellcome Sanger Institute, Cambridge (*The genomic and evolutionary landscapes of normal fallopian tube epithelium*).

A total spend of £99 336.00

**Cancer Research UK/Pathological Society Pre-Doctoral Research Bursary (55/45 split funding)** (Deadline dates 26 March and 17 September).

A total of 2 applications were received and funded:

Dr S De Noon, UCL (*DNA methylation profiling for improved classification of CD-34 positive sarcomas and myxofibrosarcoma*).

Dr T Fujiwara, UCL (*Using Topographic Single Cell Sequencing and Image Analysis to Explore the Whole Genome Duplication Landscape of Undifferentiated Sarcoma*).

A total spend of £39 518.00

**New grant schemes 2020**

The Research Sub-committee grant portfolio will expand in 2020 with the introduction of the Jean Shanks/Pathological Society Clinical Academic Research Partnership (CARP) grant. This offers support for NHS consultants who wish to undertake research and aims to encourage consultants with an MD or PhD (or equivalent) who are currently not research active to participate in high-quality research collaborations with established leading biomedical researchers. Funding covers 3 or 4 Programmed Activities (PAs) for R&D over 2 years in the first instance. See [Pathological Society](#) website for full details of this new grant scheme

**Covid-19 related issues**

The Covid-19 crisis has significantly impacted students and fellows undertaking PhDs, and the Society has agreed to increase salary costs for an additional 6 months in these instances. No-cost extensions will be granted to those grants covering consumables only.

**Going forwards**

The Research Sub-committee continues to follow a strategy to support the Society's mission of "understanding disease" through high-quality research. In the next 3-5 years, we aim to:

- Promote, design and refine a variety of research funding schemes accessible by and suited to the needs of all members of the society, with particular encouragement of trainee pathologists to undertake tissue-based research.
- Promote molecular pathology research, training and education, including involvement in the Society's molecular pathology Sub-committee with support for its research and education schemes, further support for the annual summer school in molecular pathology.
- Promote digital pathology research, training and education.
- Facilitate development of expertise in animal model pathology within the Society through the support of appropriate meetings and courses.
- Support research collaborations between the Society's pathologists and scientists elsewhere in the world and in industry.
- Establish links with other professional societies and research centres/bodies involved in pathological research (both within the UK, Eire and abroad).

**The Research Sub-committee would like to thank Dr Nick West who retired in July 2019 and has been a valuable member of the Research Sub-committee.**

**The Research Sub-committee would like to welcome Prof N Coleman, Prof K Hunter & Dr L Farmkiss who joined the Research Sub-committee in July 2019.**

**Gareth Thomas, July 2020**

**AGENDA ITEM 8.3 REPORT OF MOLECULAR PATHOLOGY SUB-COMMITTEE**

The Molecular Pathology Sub-committee (MPSC) was created in June 2018 and the first Chair was co-opted in 2018 and will hold that position for 3 years. Subsequent Chairs will be elected by the Society membership and will hold this position for 3 years, including being a member of both the full Committee and the Finance and General Purposes Committee. In addition, there will be up to 4 other Society members who will join the MPSC



during their tenure on the full committee. Other Officers and Sub-committee Chairs may attend (General Secretary, Research Sub-committee Chair and Education Sub-committee Chair will be co-opted to serve for the first year of the Molecular Pathology Sub-committee to advise on set up and direction of the new Sub-committee). Other members and non-members (including an industry representative) may be co-opted (up to 4 and they are non-voting). Membership of the Sub-committee is for 3 years. MPSC Chair to be elected 1 year in advance of the retirement of the incumbent Chair to allow shadowing of the Chair for 1 year prior to taking up office.

The remit of the MPSC is to further the interests of the Society through the support and development of molecular pathology within the specialty of Histopathology, through educational and research initiatives; to foster collaboration with other societies and funders; to develop strategy in this area; to evaluate and recommend funding of applications for research or education orientated programmes, grants and awards; and to report to and advise the full Committee on such issues.

The MPSC meets twice a year, by teleconference, to discuss Molecular Pathology grant funding and any other matters of relevance to the molecular pathology components of the research and teaching aims of the Society. Minutes of these meetings are available from the Society office.

The members of the Molecular Pathology Sub-committee are as follows:

Prof M Salto-Tellez, Belfast	(Chair)
Prof M Arends, Edinburgh	(FGP Representative)
Prof G Thomas, Southampton	(Research Sub-committee Representative)
Dr Y Krishna, Cheshire	(Trainees Sub-committee Representative)
Dr A Mukherjee, Nottingham	(Education Sub-committee Representative)
Prof M Du, Cambridge	
Sidhant Seth, Edinburgh	(Undergraduate Sub-committee Representative)
Dr Susan Richman, Leeds	
Prof R Huss	(Industry Representative)

The Molecular Pathology Sub-committee would like to thank Sidhant Seth and Dr Yamini Krishna who retired from the Sub-committee in 2019 and have been valuable members of the Molecular Pathology Sub-committee.

### **Achievements**

The MPSC has pursued 4 initiatives since it was created in 2018.

### **Trainee-Clinical Scientist Partnership Grant Funding Scheme in Morpho-Molecular Pathology**

#### New for 2019

Six applications were received of which one was funded from Dr T Millner, UCL for the project 'Investigating regional heterogeneity and progression-associated markers in oligodendrogliomas'.

A total spend of £47 146.00

### **Pathology-driven complex computational analysis of cancer (pathology-led cancer integromics)**

#### In final stages of discussion within the Pathological Society Committee

This scheme provides a mechanism for a young academic pathologist (lecturer or senior lecturer), in partnership with a leading scientist (with experience in driving complex genomic studies) and a senior, academic mentoring pathologist, to generate multi-faceted, high-throughput information in well-curated clinical sample collections.

Proposed spend of £250,000.00 per year.

### **Potential Links for Pharma Sponsorship in Future Pathological Society Meetings**

While winter meetings continue as PathSoc-only meetings to galvanize the academic pathology membership in the UK, the summer meetings are integrated meetings that include sessions on morphology-based diagnosis, tissue and cell-based molecular diagnostics, applied research, diagnostic digital pathology (DP), research DP/AI and translational research. At the same time that we highlight changes to our potential industry partners, we should open 2 other opportunities for industry to engage with our summer meetings: biotech/diagnostic companies driving courses to present new technology or new diagnostic approaches and pharma industry organizing courses to learn/update new tests associated with individual drugs in specific cancer types.

The list of potential contributors is ready for future use.



### **Course on molecular pathology & genomics for pathologists and tissue-based clinical scientists**

The proposed course “An on-line course for the introduction of Pathologists and tissue-based Clinical Scientists to genomic interpretation” has been approved, but has not yet taken place. This is because a) the companies that were originally supporting the course have not delivered as expected; and b) the team of bioinformaticians that was going to deliver the course have moved to the private sector (Sonrai analytics). However, we feel that there is still a need for a good, short, on-line delivered, PathSoc sponsored course, organised by the Molecular Pathology subcommittee. This is particularly so at a time in which the MRC Molecular Pathology Nodes are coming to an end and there has been no effort to rationalize whatever didactic materials have been produced under that sponsorship. Hence, the Mol Path Subcommittee plan to start the process of bringing together existing online molecular pathology teaching materials from a range of institutions to create a comprehensive on-line course. Course contents, general learning outcomes, skill-based learning outcomes and technical requirements will be defined once the materials have been collected, reviewed and classified.

### **Objectives for 2020**

- a) To finalise the ongoing initiatives as described above
- b) To prepare the transition to a new Chair of the MPSC

**Manuel Salto-Tellez, July 2020**

### **AGENDA ITEM 8.4 TRAINEES' SUB-COMMITTEE REPORT**

The Trainees' Sub-committee is responsible for representing the trainee membership of the Society. We work with the trainee community to raise awareness of the Society and the benefits of membership. We aim to facilitate trainees in their research, education and academic pursuits.

#### **Education, research and working together with the Undergraduate Subcommittee**

Members of the Trainees' subcommittee write cases for monthly publication in Diagnostic Histopathology.

We organise the annual Pathological Society sponsored “Introduction to Academic Training” event, aimed at ST1 histopathology trainees. We held this event for the first time during the ST1 Block Teaching week in Bristol; attendance was excellent, and we were approached afterwards by many ST1s interested in finding out more about an academic career. We plan to hold the event virtually this year (due to social distancing restrictions).

We have worked with the Education subcommittee to design a scheme to recognise excellence in histopathology training, the “Golden Microscope” award. The first award was presented at the 2019 Summer Meeting.

We have created PathSoc Foundation Associate Membership (for Foundation doctors with an interest in histopathology) and are planning to hold joint Foundation events together with the BDIAP and RCPATH.

#### **Meetings**

We organised successful trainee-led sessions at the Summer Meeting 2019 and the Winter Meeting 2020. We are currently working together with the BDIAP trainee councillors to plan the trainee programme for the Summer 2021 Meeting. We will host a stand at future meetings to promote the many opportunities the Society offers to trainees and to allow more interaction between trainees and the Trainees' Subcommittee.

#### **Fostering Academic Pathology**

We help to plan and run the National Academic Trainees Network (NATN) events. These events provide an invaluable forum for networking and gaining skills for a career in academic pathology. Our next event will be delivered virtually (due to social distancing restrictions).

We have created a mentoring scheme for academic pathology trainees who are at pre-Clinical Lecturer level.

#### **Website and Social Media**

The twitter account @pathsoc has approximately 2767 followers. It is a useful way to communicate with trainees. We also have a NATN WhatsApp group and create a Trainee WhatsApp group at Summer and Winter Meetings.

The PathSoc funded website <http://www.ap.virtualpathology.leeds.ac.uk> provides advice for people considering applying to histopathology and for trainees considering or undertaking an academic career. It has been accessed by over a thousand people from around the world.



We continue to support the Society in maintaining the trainee-section of the PathSoc website to ensure that it remains an up to date and useful educational tool and source of information. We welcome feedback and ideas.

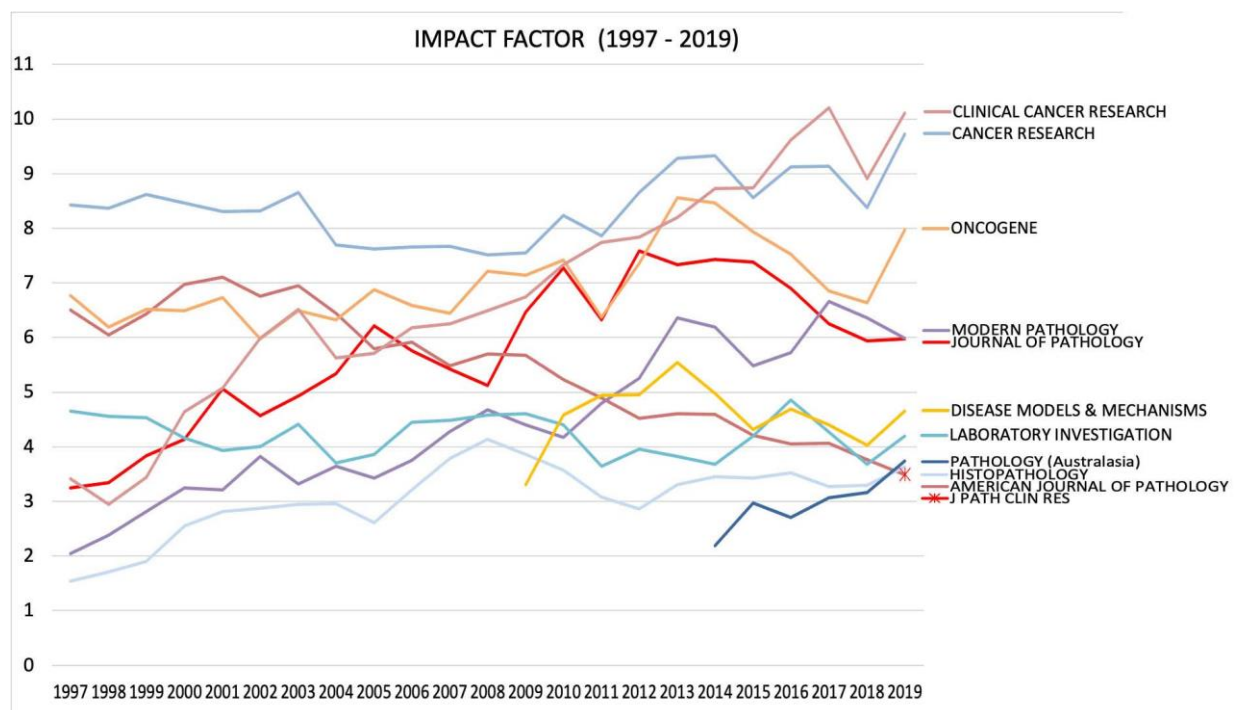
I would like to sincerely thank the members of the Trainees’ subcommittee for all their hard work this year. Dr Jon Griffin, Dr Kathryn Griffin, Dr Yamini Krishna, Dr Alice Westwood, and Dr Laura Whitehouse are retiring after three years on the Trainees’ Subcommittee – I am extremely grateful for the valuable roles that they have played. I am retiring also – I have thoroughly enjoyed my time on the Trainees’ Subcommittee and would like to thank everyone who has supported me in the role. Dr Kate Marks will take over as Chair. I wish her all the best and look forward to seeing the achievements of the Trainees’ Subcommittee continue to grow over the next three years.

Caroline Young, July 2020

**AGENDA ITEM 9.1: EDITORS REPORT, JOURNAL OF PATHOLOGY**



- Clarivate Analytic’s latest Impact Factor is 5.979 (2019), improved from 5.942 in 2018. The journal remains strong in comparison with close pathology and oncology competitors. We retain the top ranking for general pathology research journals and overall are 6/78 in Pathology, 41/244 in Oncology.

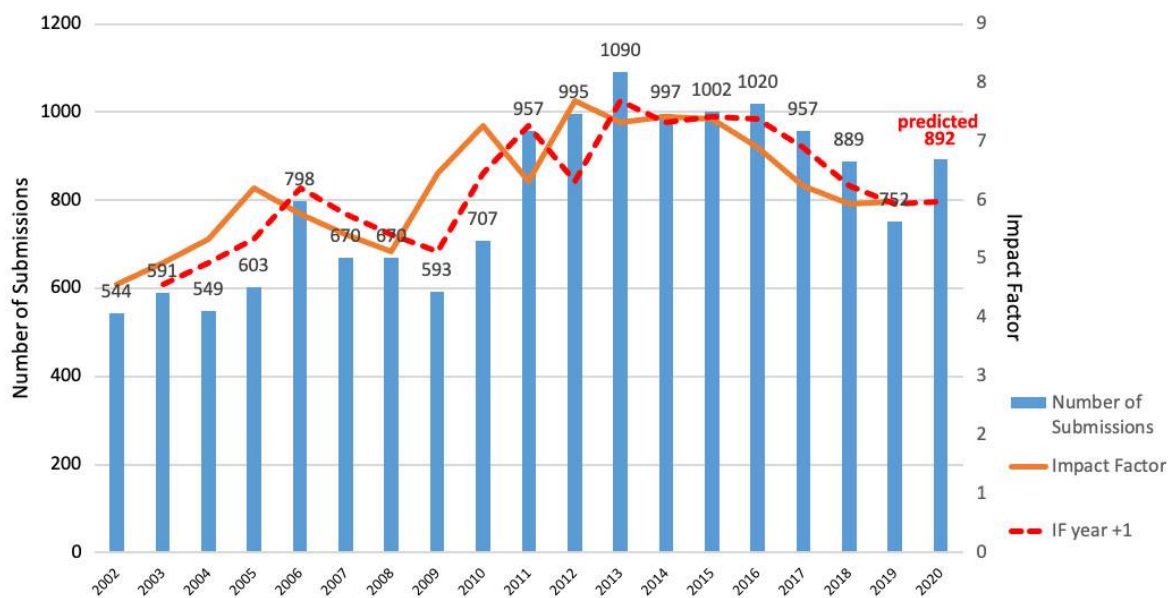


- In addition to attracting the best papers addressing disease mechanisms, high quality regular review material augmenting the Annual Review Issues and marketing the Journal to non-traditional scientific and clinical groups are key factors for maintaining and improving our position. The journal’s website is to be improved further this year by teams within our publisher, Wiley.
- The current editorial team has Simon Herrington as Editor in Chief. Richard Poulson is full time Scientific Editor; he shepherds the Annual Review Issue (ARI), works on the triage rota, edits most manuscripts prior to acceptance and continues to screen figures in submitted manuscripts entering review. Anomalies are identified in approximately 11% of these, and this continues to be a significant and important workload. Phil Coates is a Senior Editor with ~25% commitment to the Journal of Pathology and particular responsibility



for Invited Commentaries, Invited Reviews and Virtual Issues (which re-emphasise the availability of articles within a theme). The current Associate Editors are Ming Du, Will Foulkes, Steve Fox, David Huntsman, Rachael Natrajan, Nischalan Pillay, Jorge Reis-Filho, Brian Rubin and Nathalie Wong, plus Louise van der Weyden (Wellcome Sanger Institute, Cambridge) and Laura Wood (Johns Hopkins University School of Medicine, Boston) both of whom joined recently as part of scheduled turnover and expansion. This year has been challenging for editors as Wiley centralised their provision of Editorial Office support (to Oxford and regions of India). Also, our Publisher, Rupert Cousens (Wiley, Oxford), moved within Wiley and that role is now managed by Lena Jacobsen in Denmark. Production is now arranged by Wati Ahmad in Singapore, who has helped us cope with iterations of an online proofing system being developed by Spi-Global. All issues of the journal have been published on time. We have also had a change of Senior Marketer supporting the journal; Laura Simmonds has been pro-active and is helping to increase the visibility of the journal and improve the website. The journal follows best practice for ethics and research integrity and the Editor in Chief and Scientific Editor attended the 6<sup>th</sup> World Congress on Research Integrity and pre-workshops in June 2019.

- Submission numbers appear to shadow the Impact Factor. The number of items published has decreased slightly, but it is our perception that the quality of accepted articles has not changed.



Our effective and robust triage system involves at least 3 members of the editorial team (on a rota basis). In the last 2 years, 26% of submissions were sent for external review (overall 2-year acceptance rate of 17% of submitted non-ARI articles). In the last 12 months the time to first decision averaged 11 days and to final decision 20 days; good compared with other journals. The workload due to the general problem that good reviewers are not easily recruited is being countered by appointment of additional Associate Editors. Manuscripts from PR China comprise 35% of submissions (15% of these enter review)(2-year averages).

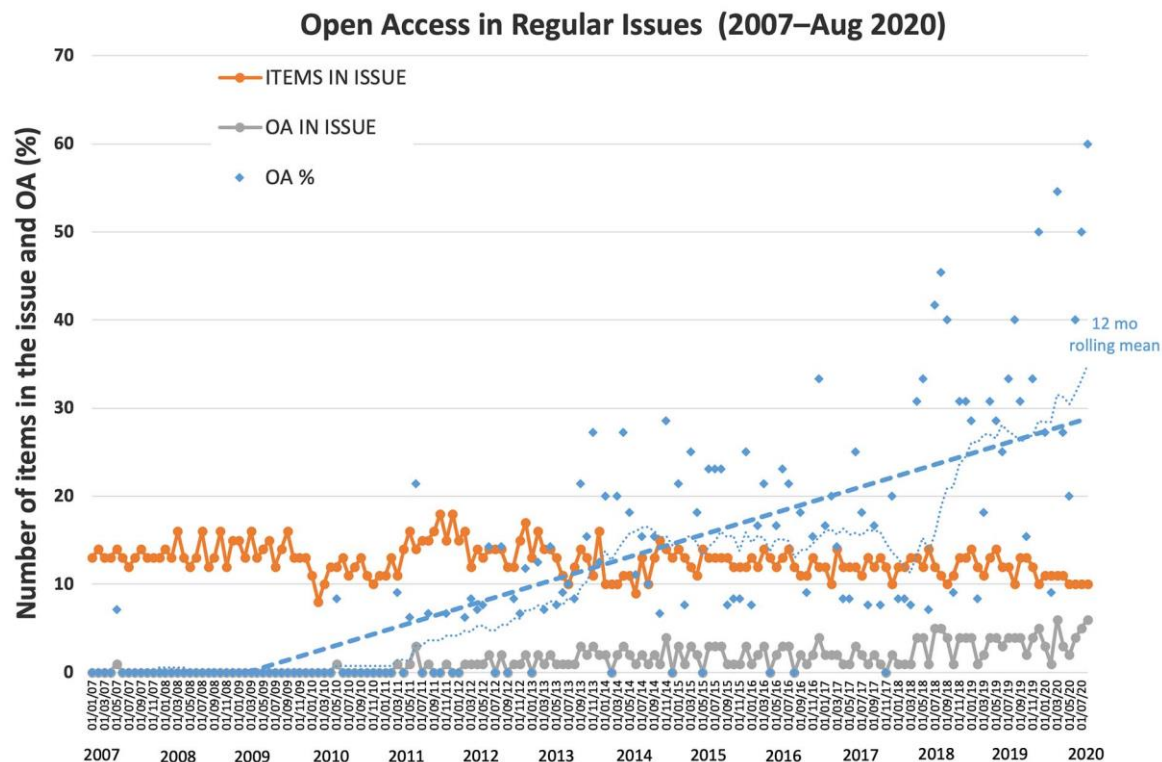
- The **2020 Annual Review Issue** ‘Recent Advances in Pathology’ with Editors C Simon Herrington, Richard Poulson and Philip J Coates was published in April (as were the [2019 and 2018 ARIs](#) aiming to convert early cites into Impact Factor cites. The 2019 and 2020 ARIs have attracted a good rate of citation so far. Invitations are being sent for the 2021 ARI, also themed ‘Recent Advances in Pathology’ supported by Guest Editors Hartmut Koeppen (Genentech Inc) and Adrian Jubb (23andMe).
- Open Access publication.** Plans to mandate some researchers’ use of this, together with plans to impose a cap on article processing fees for research published using EU and several major other funders’ grants, pose a significant threat to journal income. This has been outlined previously and although we anticipated that the pace of change may become rapid, the European Research Council’s Scientific Council recently [signalled](#) its opposition to making hybrid journals (such as The Journal of Pathology) non-compliant with Horizon Europe funding.

The proportion of items published in The Journal of Pathology with Open Access is increasing (see Figure below); 50% may require us (and the publisher) to consider if our current hybrid publishing model is



sustainable.

A further threat to income arises from this year’s JISC deal with Wiley for paying the Article Processing Charge for immediate Open Access for eligible authors in UK institutions. The lack of clarity over supplementary charges for colour figures, which are a significant income, is being addressed.

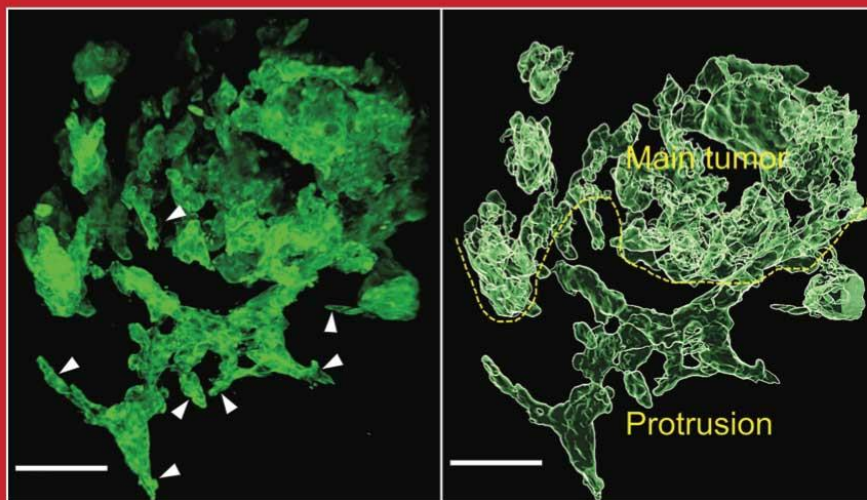


7. **COVID-19.** The pandemic has caused widespread closure of scientific institutions and many may not open fully for months. Wiley and other production staff around the world have adapted well to home-based working and there has not been significant disruption of our publication schedule. We have seen a brief increase in submissions while researchers finalised manuscripts in hand, but we anticipate a longer decrease in submissions because researchers will not be able to resume normal working. Manuscripts in revision have been handled sympathetically. Marketing has been limited by the cancellation of major conferences; those operating virtually offer little opportunity for advocacy. To date we have received 45 manuscripts related to COVID-19 / SARS-CoV-2. Seven entered review, two have been offered a transfer of files to J Pathol Clin Res, and an [Invited Review](#) is now published (‘trending’ on PubMed).
8. Finally, I would like to thank all the Editors, staff at Wiley and associated vendors, the Editorial Board, authors, and reviewers for their continuing and strong support for the Journal: without them, and the readers, there would be no Journal.



WILEY  
Blackwell

THE JOURNAL OF  
**Pathology**  
*Understanding Disease*



[www.thejournalofpathology.com](http://www.thejournalofpathology.com)

Volume 251 • Number 4

August 2020

*Contents include:*

- The mutational landscape of tongue SCC
- Malignant melanotic Xp11 neoplasms
- TNF $\alpha$ -triggered inflammatory bowel disease
- 3D analysis of extrahepatic cholangiocarcinoma
- Sex-opposed metaflamatory effects of 27-hydroxycholesterol
- 3D reconstruction of human endometrium

 A Journal of  
The Pathological Society

ISSN 0022-3417

Publishing since 1892  
Over 125 Years of Research Excellence

Cover illustration: T Yoshizawa *et al.* *J Pathol* 2020; **251**: 400–410

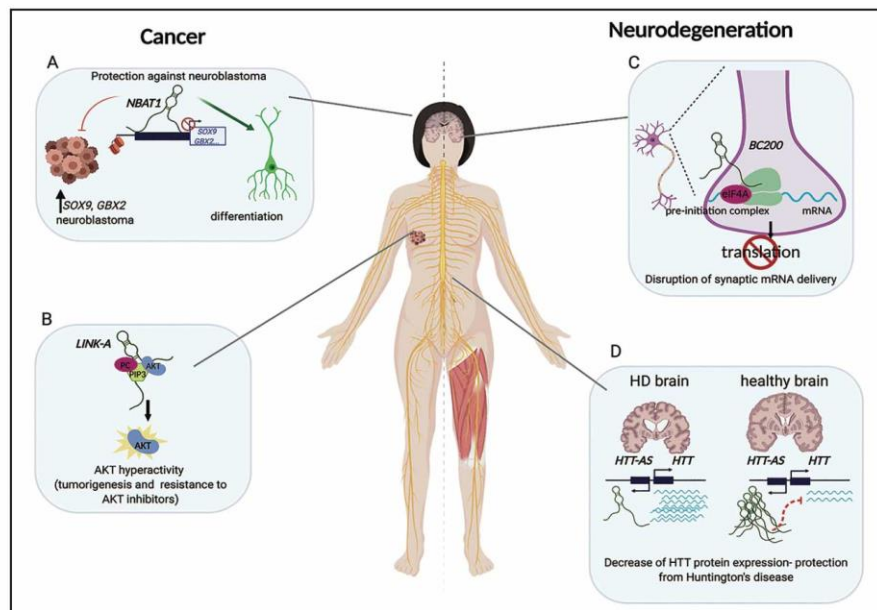




ARI 2020 ISSUE

**WILEY**  
Blackwell

THE JOURNAL OF  
**Pathology**  
*Understanding Disease*



[www.thejournalofpathology.com](http://www.thejournalofpathology.com)

**Annual Review Issue**

Volume 250 • Number 5 • April 2020

**Recent Advances in Pathology**

Edited by C Simon Herrington, Richard Poulson and Philip J Coates

**Contents include:**

- Methylation based tumour diagnosis
- Molecular pathology of Lynch syndrome
- Mesenchymal stromal cells in cancer
- Recent advances in tumour hypoxia
- Radiation tissue damage
- Implementation of PD-L1 and TILs as immuno-oncology biomarkers for breast cancer
- Software-assisted decision support in digital histopathology

 **A Journal of  
The Pathological Society**

ISSN 0022-3417

**Simon Herrington**  
Editor in Chief, The Journal of Pathology, July 2020



**AGENDA ITEM NO. 9.1: EDITORS REPORT, JOURNAL OF PATHOLOGY, CLINICAL RESEARCH**



1. The Journal of Pathology: Clinical Research (JPCR) is progressing steadily. The most significant event this year has been the announcement in June of the Journal's first impact factor, 3.489. This puts JPCR 20<sup>th</sup> of 78 titles in pathology and places it in a similar position to Histopathology (3.626, 18<sup>th</sup> of 78) and the American Journal of Pathology (3.491, 19<sup>th</sup> of 78). Moreover, the Journal is listed higher than Virchows Archiv (2.906, 24<sup>th</sup> of 78), Human Pathology (2.735, 27<sup>th</sup> of 78) and the Journal of Clinical Pathology (2.460, 30<sup>th</sup> of 78). This is an excellent position from which to build the Journal over the next few years.
2. There has been sufficient copy to maintain publication of 4 issues a year, each containing at least 6 articles. There are early signs of a rise in submissions and, with the recent announcement of the first impact factor, we are likely to see this increase further. We are discussing the possibility of increasing the number of issues to 6 per annum, but this will require a sustained 50% increase in accepted content.
3. The current position, compared to data since June 2018, is shown below:

	25/05/2018	27/05/2019	23/07/2020
<b>Submissions</b>			
<i>Invitations</i> to transfer from J Path	393	468	<b>570</b>
Total submissions	158	198	<b>270</b>
Reviews	5	10	<b>16</b>
Editorials	2	3	<b>3</b>
Transfers from J Path	89	103	<b>137</b>
Direct submissions	69	95	<b>133</b>
<b>Outcomes</b>			
Accept	90	117	<b>154</b>
• In issues	85	109	<b>143</b>
• In EarlyView	2	5	<b>7</b>
• Accepted online	3	1	-
• With Production	0	2	<b>4</b>
Minor revision	0	0	<b>1</b>
Major revision	3	4	<b>3</b>
Reject	39	47	<b>57</b>
Refer elsewhere	11	15	<b>31</b>
Withdrawn	10	12	<b>14</b>
Under review	5	3	<b>10</b>

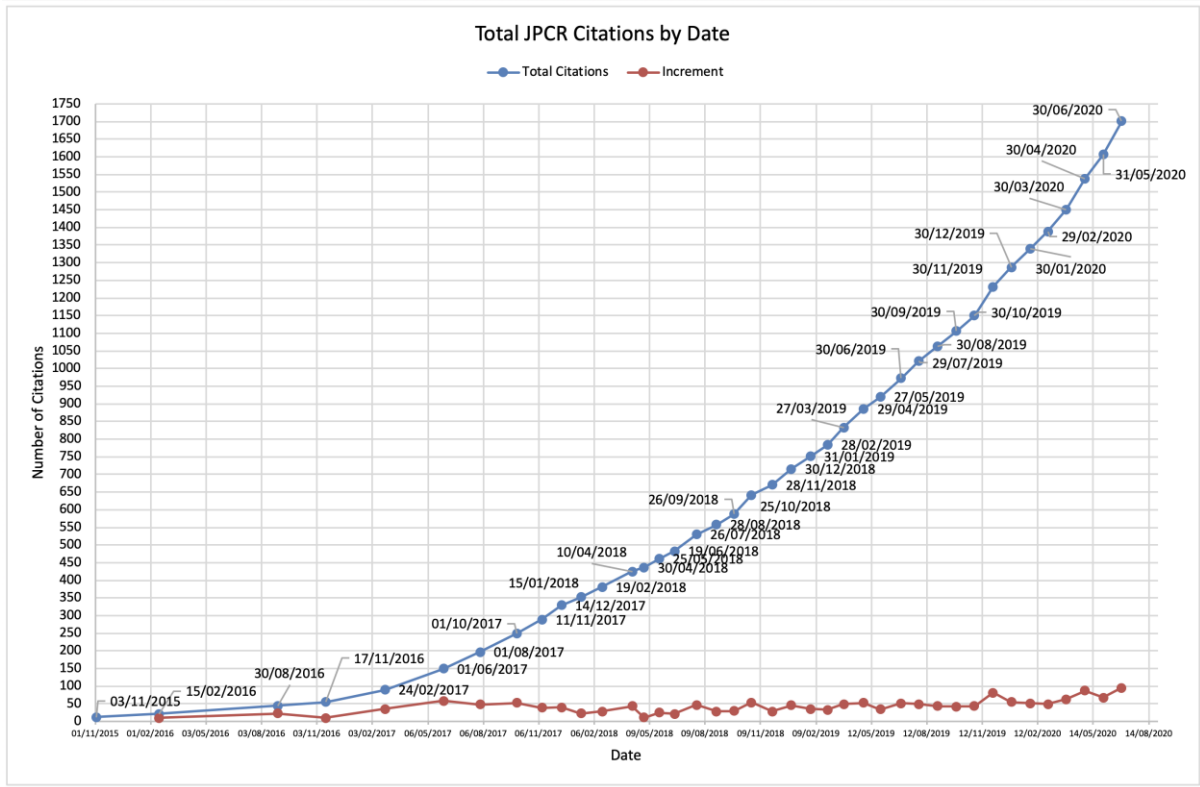
4. There is still a clear difference in outcome for papers transferred from JPATH compared with direct submissions, demonstrating that this method of attracting submissions increases manuscript quality:

	N	Accepted
Total with final decision	256	154 (60.2%)
Transfers from JPATH	128	94 (73.4%)
Direct submissions	128	60 (46.9%)



5. Eighteen issues, each of at least 6 articles, have been published, the current issue being July 2020. All articles, including those in Early View, are available from the Journal website:  
[http://onlinelibrary.wiley.com/journal/10.1002/\(ISSN\)2056-4538](http://onlinelibrary.wiley.com/journal/10.1002/(ISSN)2056-4538)

6. Citations to articles published in the Journal are increasingly steadily, with a possible recent rise, as shown by analysis of citations identified using Google:



7. In view of the cancellation of most face-to-face meetings and conferences, marketing is focusing on social media and email-based campaigns, in addition to advocacy by members of the editorial team.

8. There have been significant changes at Wiley over the last year. We have a new publisher, Lena Jacobsen, who replaces Rupert Cousens. In addition, the editorial office is now managed by Emily Mitic, who is based at Wiley, and Aarthi Sharma. Production continues to be based in Singapore (Wati Ahmad) and Chennai, India (Priya Janaki). The journal’s new marketer, Laura Simmonds is supporting us actively.

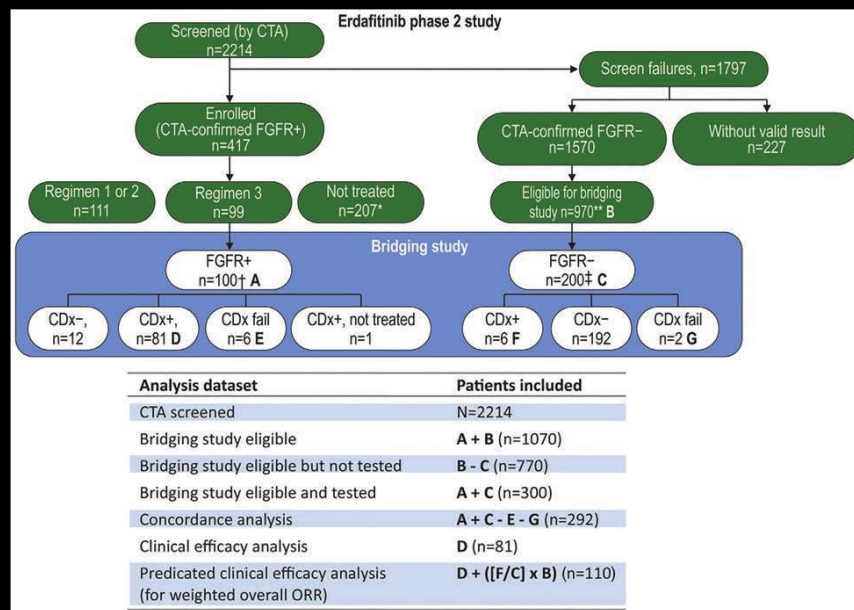
9. Finally, I would like to thank the Editors, staff at Wiley and their vendors, the authors and reviewers for their huge support as we develop the Journal into a successful publication.



# THE JOURNAL OF PATHOLOGY Clinical Research

Understanding Disease – Guiding Therapy

Open Access



Contents include:

- Post-mortem rapid tissue donation for cancer research
- Stromal PMN-MDSCs in metastatic prostate cancer
- *MDM2* amplification in *BCOR*-rearranged ESS
- *DICER1* and paratesticular sarcomas
- Growth patterns in hepatic metastases from cutaneous melanoma
- Erdafitinib companion diagnostic for identifying *FGFR* alterations
- Evolution of lung pathology in lymphangioleiomyomatosis



Cover illustration: Wang, Burgess *et al*, *J Pathol Clin Res* 2020; 6: 207-214 (July 2020)

Simon Herrington  
Editor in Chief, The Journal of Pathology: Clinical Research  
July 2020



## **UNDERGRADUTE SUB-COMMITTEE REPORT (not on the Agenda)**

### **Events over the past year**

- 1) The 2019 Summer meeting UG day, organised by Richard Byers was successful. Despite RT's absence following a considerable period of ill health, new member of UGSC Amber Matkowski (currently vice-chair of UGSC) gave a well-received and engaging talk.
- 2) UGSC welcomes Gemma Petts to oversee UG activity and looks forward to working with her.
- 3) UG Regional Representative Network set up with reps to cover Northern England, Midlands, London, Southern England, Ireland. The positions for Scotland rep and Wales rep remain vacant.
- 4) Resource pack developed containing information on how to get involved with Pathological Society, signposting to resources and advice on engaging with pathology at medical school. This pack is to be circulated to regional representatives who will customise it to the specificities of their own region.

### **Current Work**

- 1) Given the impact of the COVID-19 pandemic, the majority of UGSC's efforts are at present focused on a total revamp of the UG website.
- 2) We currently await approval for a new web host and will be keen to benefit from the general committee's proposal to appoint a new webmaster given building a new website can take considerable effort from such a small subcommittee.

### **Moving Forwards**

- 1) Much of the work for UGSC's future activity has been hampered by the pandemic. This has affected UGSC in two ways:
  - Cancellation of 2020 Summer meeting. Summer meetings have been the main opportunity to interact with UG members. Engaging face to face enables us as UGSC know what UG members want from the Society, potentially source enthusiastic members who might like to get actively involved with the UGSC and is probably the most engaging event for the members. Plans had been made to use this event to foster the new Regional Rep Network allowing UG members to meet their local rep.
  - Closure of medical schools means there are likely to be few if any local pathology events and regional reps haven't yet been able to play the roles within medical schools we had set up for them. Given social distancing policies, it is not clear how and when pathology events, talks and socials will re-start at individual schools.
- 2) UGSC chooses to see the effects of the coronavirus as an opportunity to think creatively about what we can offer the UG membership remotely. This may include webinars, interviews and more online resources. The resource pack may have to be reviewed to reflect these new offerings.

**Roberta Turner**  
**Chair, Undergraduate Sub-committee**  
**July 2020**